

# WORKSHOP

Our Workshop range includes a variety of innovative magnetic devices for solving challenging problems in workshops or factories. It includes simple magnetic tools and magnetic welding clamps.

## Recovery Tool

- Constructed from a ferrite magnet sandwiched between two steel plates
- Designed for recovery or retrieval, such as recovering objects from coolant tanks or vats



Product Number	Width	Height	Thickness	Pull Force
METRIC	mm	mm	mm	kg
E936	80	101.5	36	50
IMPERIAL	in	in	in	lbs
E936	3.1	4.0	1.4	110

## Heavy Duty Magnetic Tool Rack

- Ideal for use in the home, garage or workshop
- Modular design allows multiple units to be connected
- Non-magnetic tools can be placed between the rack and the wall



Product Number	Overall Length	Body Width	Body Depth
METRIC	mm	mm	mm
MTR250	345	24.5	14
IMPERIAL	in	in	in
MTR250	13.6	0.96	0.6

## Magnetic Trays

- Magnet in base attaches the tray firmly to ferrous surfaces and holds ferrous items in the tray
- Magnet base is rubber coated to safeguard surfaces



Product Number	Dimensions	Product Number	Dimensions
METRIC	mm	IMPERIAL	in
E630	360.7 x 130.0	E630	14.2 x 6.3
E631	292.1 x 271.8	E631	11.5 x 10.7
E632	241.3 x 142.2	E632	9.5 x 5.6
E633	149.9 D	E633	5.9 D
E634	109.2 D	E634	4.3 D

## Telescopic Pick-up Tool

- Powerful neodymium iron boron magnets are used to ensure maximum pull from a small magnetic area
- Ideal for retrieving ferrous objects that are out of reach



Product Number	Length	Pull Force
METRIC	mm	kg
EM967-R	147-660	1
IMPERIAL	in	lbs
EM967-R	5.8-26.0	2.1

## Magnetic Sweeper

- Adjustable telescopic handles
- Quickly and easily clear workshop and factory floors, sports pitches and car parks of spill items or potentially dangerous metal debris like pins, nails and metal fragments
- Handle mounted quick release mechanism



Product Number	Head Width	Height Including Handle	Pull Force
METRIC	mm	mm	kg
MSW385	385	1050	2
IMPERIAL	in	in	lbs
MSW385	16.0	41.3	4.4

## Swarf Wand

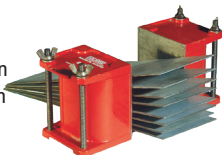
- Separate small parts after rumblings
- Quick release handle
- Lightweight, non-rusting shaft



Product Number	Length	Collection Capacity
METRIC	mm	kg
MW400	400	6.35
IMPERIAL	in	lbs
MW400	15.8	14.0

## Sheet Floaters

- Sheet separators use magnetic repulsion to separate sheets in a stack so they can be removed more easily
- Sold in pairs



Product Number	Width	Height	Depth	Mounting Hole Size
METRIC	mm	mm	mm	
E913	73	76	65	M8
E914	92	102	76	M8
E915	113	152	89	M10
IMPERIAL	in	in	in	
E913	2.87	2.99	2.55	M8
E914	3.62	4.02	2.99	M8
E915	4.45	5.98	3.50	M10

## Magnetic Tape

- Material: Strontium ferrite in thermo-plastic binder.
- Max operating temperature: 80°C/176°F
- Magnetic on 1 face only
- Can be cut with scissors

All supplied with standard acrylic adhesive.



Product Number	Width	Thickness	Length	Pull Force	Units / Pack
<b>METRIC</b>					
EM884-R	13.0	0.50	1	28	1
FM660	7.5	0.75	10	44	1
FM661	12.5	0.75	10	44	1
FM662	20.0	0.75	10	44	1
<b>IMPERIAL</b>					
EM884-R	0.511	0.02	3.3	1.0	1
FM660	0.295	0.03	32.8	1.6	1
FM661	0.492	0.03	32.8	1.6	1
FM662	0.787	0.03	32.8	1.6	1

## Magnetic Extrusion

- Material: Strontium ferrite in thermo-plastic binder
- Max operating temperature: 80°C/176°F
- Magnetic on 1 face only
- Forms a strong bond when paired with itself



Product Number	Width	Thickness	Length	Pull Force	Units / Pack
<b>METRIC</b>					
EM880-R	9.5	3.6	2	65	1
FM670	9.5	3.6	10	65	1
FM671	11	4.6	10	65	1
FM672	15	6.4	10	65	1
<b>IMPERIAL</b>					
EM880-R	0.375	0.141	6.6	2.35	1
FM670	0.375	0.141	32.8	2.35	1
FM671	0.433	0.181	32.8	2.35	1
FM672	0.590	0.251	32.8	2.35	1

## Round Holding Magnet

- Ceramic magnet with handle



Product Number	Diameter	Thickness	Pull Force	Product Number	Diameter	Thickness	Pull Force
<b>METRIC</b>				<b>IMPERIAL</b>			
E2600	36.2	7.2	7.3	E2600	1.425	0.283	16
E2601	50.8	8.0	11.3	E2601	2.000	0.315	25
E2602	66.7	9.5	29.5	E2602	2.625	0.374	65
E2603	81.4	10.8	43.1	E2603	3.203	0.425	95

## Table-Top Demagnetiser

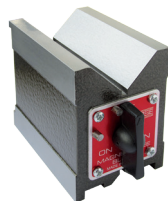
- Lightweight unit for the removal of residual magnetism from components after workholding



Product Number	Voltage	Width	Height	Depth
<b>METRIC</b>				
DB956CAN	110	150	117	87
<b>IMPERIAL</b>				
DB956CAN	110	5.90	4.61	3.43

## 'V' Blocks

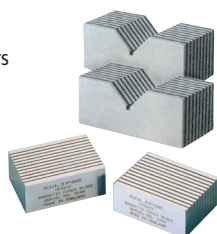
- Material Alnico 5
- Ideal for holding cylindrical and complex workpieces for marking, sparking erosion, grinding, and measurement operations
- Can be used on base, side, or end
- Top 'V' maximum diameter 65mm/2.56"
- Bottom 'V' maximum diameter 20mm/0.79"



Product Number	Width	Length	Height	Max Clamping Forces	
<b>METRIC</b>					
E934	69.85	101.6	95.25	200	150
E934MP	69.85	101.6	95.25	200	150
E935	69.85	80.0	95.25	160	120
E935MP	69.85	80.0	95.25	160	120
<b>IMPERIAL</b>					
E934	2.75	4.0	3.75	440	330
E934MP	2.75	4.0	3.75	440	330
E935	2.75	3.2	3.75	352	264
E935MP	2.75	3.2	3.75	352	264

## Chuck Blocks

- Supplied in matched and numbered pairs
- May be used vertically or horizontally
- Can be machined to accommodate awkward workpieces
- Can be used to extend flux path of magnetic chuck with parallel poles



Product Number	Width	Length	Height	Units / Pack
<b>METRIC</b>				
950	75	60	30	1 Matched Pair
950V	100	50	40	1 Matched Pair
<b>IMPERIAL</b>				
950	2.95	2.36	1.181	1 Matched Pair
950V	3.94	1.97	1.574	1 Matched Pair

## Variable Welding Clamp

- Fast accurate holding of ferrous sheets and tubes for welding and assembly work
- Variable from 25° to 280°



Product Number	Length	Height	Width	Pull Force
METRIC	mm	mm	mm	kg
E952	195	200	11	20
IMPERIAL	in	in	in	lbs
E952	7.68	7.87	0.43	44

## Heavy Duty Variable Welding Clamp

- Clamps components during welding, fabrication and assembly
- Powerful 40kg/88lbs clamping force, enables larger components to be clamped with ease



Product Number	Length	Height	Width	Pull Force
METRIC	mm	mm	mm	kg
E974	140	140	35	40
IMPERIAL	in	in	in	lbs
E974	5.51	5.51	1.38	88

## 90° Fixed Welding Clamps

- Two magnetic faces in a rigid 90° angle for jiggling on sheets, pipes and tubes
- A fast and cost effective means of clamping components rigid at 90° angles during fabrication, assembly and weld preparation applications



Product Number	Length	Height	Width	Pull Force
METRIC	mm	mm	mm	kg
E971	140	140	35	40
E972	225	225	22	75
E973	300	300	35	200
IMPERIAL	in	in	in	lbs
E971	5.51	5.51	1.38	88
E972	8.86	8.86	0.87	165
E973	11.81	11.81	1.38	440

## Quick Holding Clamps

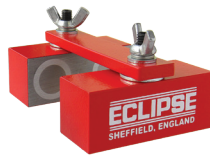
- Fast and accurate holding of ferrous metals at different fixed angles
- Also suitable for retrieval applications



Product Number	Length	Height	Width	Pull Force
METRIC	mm	mm	mm	kg
E951	100.5	65.5	12	10
E953	100.5	65.5	20	15
IMPERIAL	in	in	in	lbs
E951	3.95	2.58	0.47	22
E953	3.95	2.58	0.79	33

## Adjustable Links

- Clamp components at any angle for welding and assembly applications



Product Number	Length mm	Height mm	Width mm	Pull Force kg
METRIC	mm	mm	mm	kg
920SU (Single)	60	25	29	12
920 (Pair)	127	25	51	12
IMPERIAL	in	in	in	lbs
920SU (Single)	2.36	0.99	1.14	26.4
920 (Pair)	5.00	0.99	2.01	26.4

## Adjustable Clamping Links

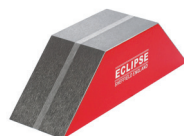
- Clamp components at any angle for welding and assembly applications



Product Number	Length mm	Height mm	Width mm	Pull Force kg
METRIC	mm	mm	mm	kg
920SUOT (Original Type Single)	60	25	29	12
920OTPR (Original Type Pair)	127	25	29	12
IMPERIAL	in	in	in	lbs
920SUOT (Original Type Single)	2.36	0.99	1.14	26.4
920OTPR (Original Type Pair)	5.00	0.99	1.14	26.4

## Mitre Clamps

- Effective and inexpensive method of clamping flat (923) or round (924) ferrous components



Product Number	Length Base Face	Length Top Face	Height	Width	Pull Force
METRIC	mm	mm	mm	mm	kg
923	156	66	45	43	100
924	184	94	45	43	68
IMPERIAL	in	in	in	in	lbs
923	6.14	2.60	1.77	1.69	220.5
924	7.24	3.70	1.77	1.69	149.9

## Positioners

- 2 magnetic blocks connected by 2 non magnetic steel straps
- The blocks contain ferrite magnetic material
- Magnetic on 2 faces
- On / Off switch located at each end



Product Number	Length	Height	Width	Pull On Flat Face	Pull On V Face
METRIC	mm	mm	mm	kg	kg
922	206.0	63.5	76.0	80	80
IMPERIAL	in	in	in	lbs	lbs
922	8.11	2.50	2.99	176.4	176.4

## Earth Welding Clamp

- Quick and easy earthing for most steel welding operations
- Provides earthing / ground on large welding operations where croc-clip or G-Clamps cannot be easily used



Product Number	Length	Height	Width	Pull Force	Maximum Current
METRIC	mm	mm	mm	kg	amps
E946	193	64	90	25	800
IMPERIAL	in	in	in	lbs	amps
E946	7.60	2.52	3.54	55	800

## Holdfasts

- Supplied with screw release handle
- Can be built into workholding, handling and assembly fixtures to provide a high clamping force and positive grip



Product Number	Diameter	Height	Fixing Holes PCD	Holes	Pull Force
METRIC	mm	mm	mm		kg
E939	44.5	44.5	31.7	2 x M8	20
E940	54.0	49.2	38.1	2 x M8	40
E941	70.0	64.5	50.8	2 x M8	88
E942	101.6	74.6	69.0	3 n/a	183
IMPERIAL	in	in	in		lbs
E939	1.75	1.75	1.25	2 x M8	44
E940	2.13	1.94	1.50	2 x M8	88
E941	2.76	2.54	2.00	2 x M8	194
E942	4.00	2.94	2.72	3 n/a	403

## Weld Holder

- Provides the welder with a powerful, rigid support on flat and round components at various angles during welding preparation applications



Product Number	Length	Height	Width	Pull Force
METRIC	mm	mm	mm	kg
E925	108	140	108	100
IMPERIAL	in	in	in	lbs
E925	4.25	5.51	4.25	220

## Steel Plate Drag

- Used to remove steel sheets from a stack and transport sheets to and from machines
- Contains powerful permanent ferrite magnets in an aluminum housing



Product Number	Length	Height	Width	Vertical Pull Force
METRIC	mm	mm	mm	kg
E964	118	98	38	170
IMPERIAL	in	in	in	lbs
E964	4.64	3.86	1.49	374.8

## Pole Indicator

- Shows the true north or true south pole of magnets
- Pocket sized
- Battery powered - Includes 4 x 1.5v batteries



Product Number	Length	Width	Thickness
METRIC	mm	mm	mm
MPI/100	132	22	19
IMPERIAL	in	in	in
MPI/100	5.19	0.87	0.75

## Magnetic Clip

- Neodymium magnet, plastic clip



Product Number	Size	Material	Colour
METRIC	mm		
E2400	88.9	Neodymium Magnet, Plastic Clip	Red
IMPERIAL	in		
E2400	3.5	Neodymium Magnet, Plastic Clip	Red

## Screwdriver Magnetizer/ Demagnetizer

- Magnetizes and demagnetizes
- Pass small tools through device to magnetize



Product Number	Length	Width	Material
METRIC	mm	mm	
E2500	25.4	25.4	High-Energy Flexible
IMPERIAL	in	in	
E2500	1.0	1.0	High-Energy Flexible