





Permanent Magnetic Overband



At A Glance

-  Protection: Primary
-  Feed Type: Conveyor
-  Material Type: Rare Earth
-  Cleaning Type: Automatic

Permanent overband magnets are used in recycling, quarrying and heavy industries. These units can be placed above flat or trough type conveyors. Large permanent magnetic packs generate deep penetrating magnetic flux fields that attract and remove 'tramp' type steel items.

This unit is considerably cheaper to purchase and run than electro-magnetic units, the only power consumption is for the geared drive.

When considering installation points it should be noted that steel belt support rollers will need to be changed to non-magnetic ones due to possible flux field absorption.



Benefits

- Continuous self cleaning
- High volume capacity
- Removes large to medium sized contamination
- Allows difficult products to be screened
- Designed for 24 / 7 operation

Performance

Magnetic Performance	3,000 Gauss
Magnetic field depth	100 Series = 100mm*, 200 Series = 200mm* 300 Series = 300mm*
Electrical Spec	415 / 380 Volts industrial three phase IP65 rated motor gearbox
Temperature	-4°F / +140°F

Suitability

Suitable Products	All conveyable products, wood chip, biomass, recyclables, aggregates, coal etc
Suitable Location	Above transfer conveyors, vibratory feeder outlets etc

Materials

Frame	Powder coated mild steel
Rollers	Mild steel
Belting	Vulcanised rubber with ultrasonically welded cleats
Lifting Points	Galvanised forged steel eyes

Cleaning

Overband magnets have a continuously running belt which takes away and deposits all attracted contamination. Carry-over cleats are fitted to ensure that contamination cannot remain on the belt. It can operate 24 / 7 operation without operator intervention.

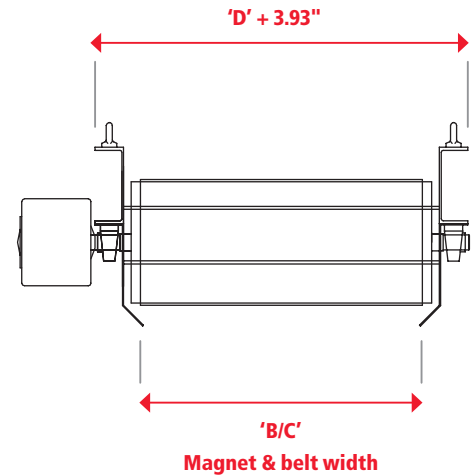
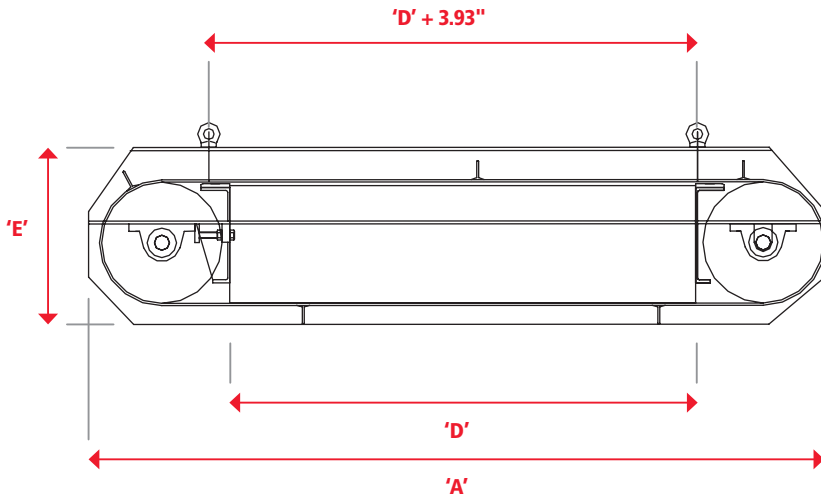
Options

- Safety electrical interface
- Armoured belting
- Hydraulic drive motor
- Tapered rollers to enable angled operation

*Mild steel test piece Ø0.19" x 0.98" long



Permanent Magnetic Overband



Part Number (100 Series)	A (inches)	B / C (inches)	D (inches)	E (inches)	Motor (kW)	Weight (lbs)
OM100/300	28	14	12	5	0.18	353
OM100/450	34	14	18	5	0.18	452
OM100/550	38	14	22	5	0.18	529
OM100/650	42	14	26	5	0.18	595

Part Number (200 Series)	A (inches)	B / C (inches)	D (inches)	E (inches)	Motor (kW)	Weight (lbs)
OM200/550	42	24	22	14	1	1499
OM200/650	46	24	26	14	1	1698
OM200/850	56	24	33	14	1	1808
OM200/1050	64	24	41	14	1.5	2139
OM200/1250	72	24	49	14	2.2	2469

Part Number (300 Series)	A (inches)	B / C (inches)	D (inches)	E (inches)	Motor (kW)	Weight (lbs)
OM300/800	58	31	31	18	1.5	3748
OM300/1050	68	31	41	18	2.2	4740
OM300/1250	76	31	49	18	2.2	5512
OM300/1500	86	31	59	18	2.2	6283
OM300/1750	95	31	69	18	2.2	7055

For non-standard sizes, please contact sales@eclipsetoolsinc.com



A world leader in magnetic technology



FM31278